



# 2008-2009 GMT Quarterly Report for District (or Undistricted) **District 13 K**



GMT: **STEVEN D SHERER**

Location: **OHIO**

GMT CA: **1 & 2**

## CLUBS

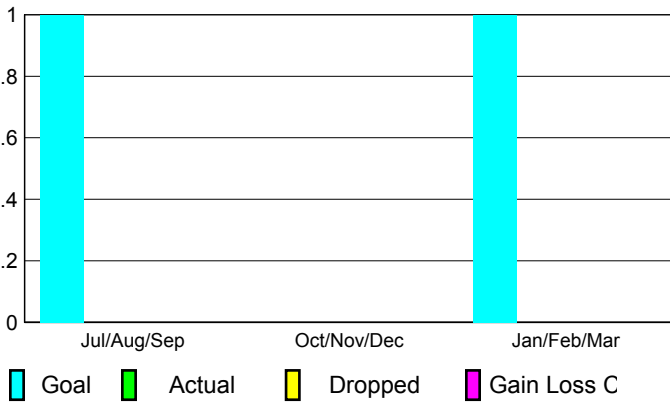
### Club Results 2008-2009

### Clubs 2007-2008

| Month         | New Club Goal | Actual New Clubs | Actual Dropped Clubs | Gain/Loss of Clubs | Gain/Loss of Clubs |
|---------------|---------------|------------------|----------------------|--------------------|--------------------|
| Jul/Aug/Sep   | 1             | 0                | 0                    | 0                  | 0                  |
| Oct/Nov/Dec   | 0             | 0                | 0                    | 0                  | 0                  |
| Jan/Feb/Mar   | 1             | 0                | 0                    | 0                  | -1                 |
| <b>Totals</b> | <b>2</b>      | <b>0</b>         | <b>0</b>             | <b>0</b>           | <b>-1</b>          |

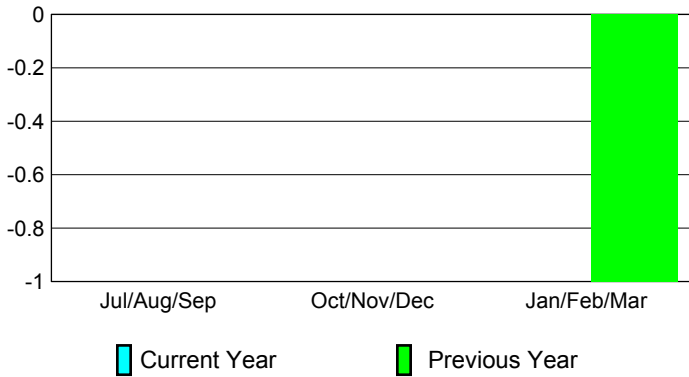
### Club Results 2008-2009

Goal, New, Dropped, Gain/Loss



### Comparison of Club Gain/Loss

Current Year Compared to the Previous Year



### YTD Status Quo Clubs 2008-2009

Status Quo Clubs Compared to Status Quo Members



## MEMBERSHIP

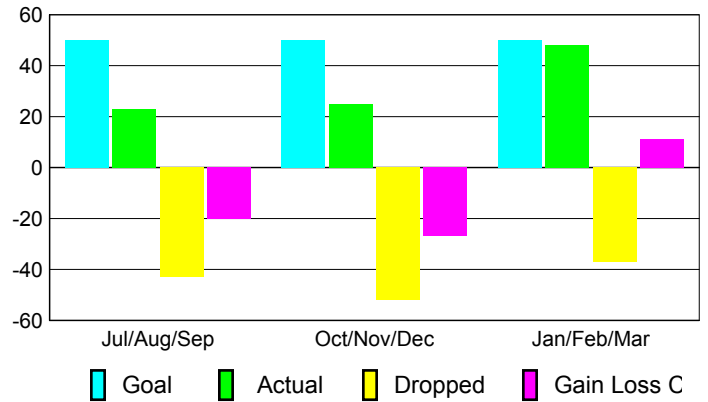
### Membership Results 2008-2009

### Membership 2007-2008

| Month         | Net Memb Goal | Actual New Memb | Actual Dropped Memb | Gain/Loss of Memb | Gain/Loss of Memb |
|---------------|---------------|-----------------|---------------------|-------------------|-------------------|
| Jul/Aug/Sep   | 50            | 23              | -43                 | -20               | -13               |
| Oct/Nov/Dec   | 50            | 25              | -52                 | -27               | -14               |
| Jan/Feb/Mar   | 50            | 48              | -37                 | 11                | 10                |
| <b>Totals</b> | <b>150</b>    | <b>96</b>       | <b>-132</b>         | <b>-36</b>        | <b>-17</b>        |

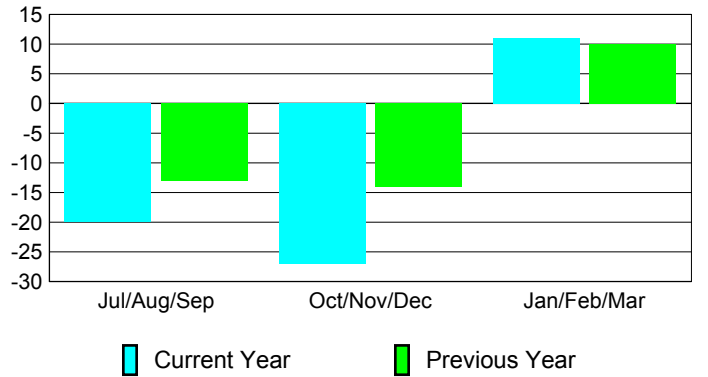
### Membership Results 2008-2009

Goal, New, Dropped, Gain/Loss



### Comparison of Membership Gain/Loss

Current Year Compared to the Previous Year



### Gender Comparison 2008-2009

